



CHATTERTON | REES



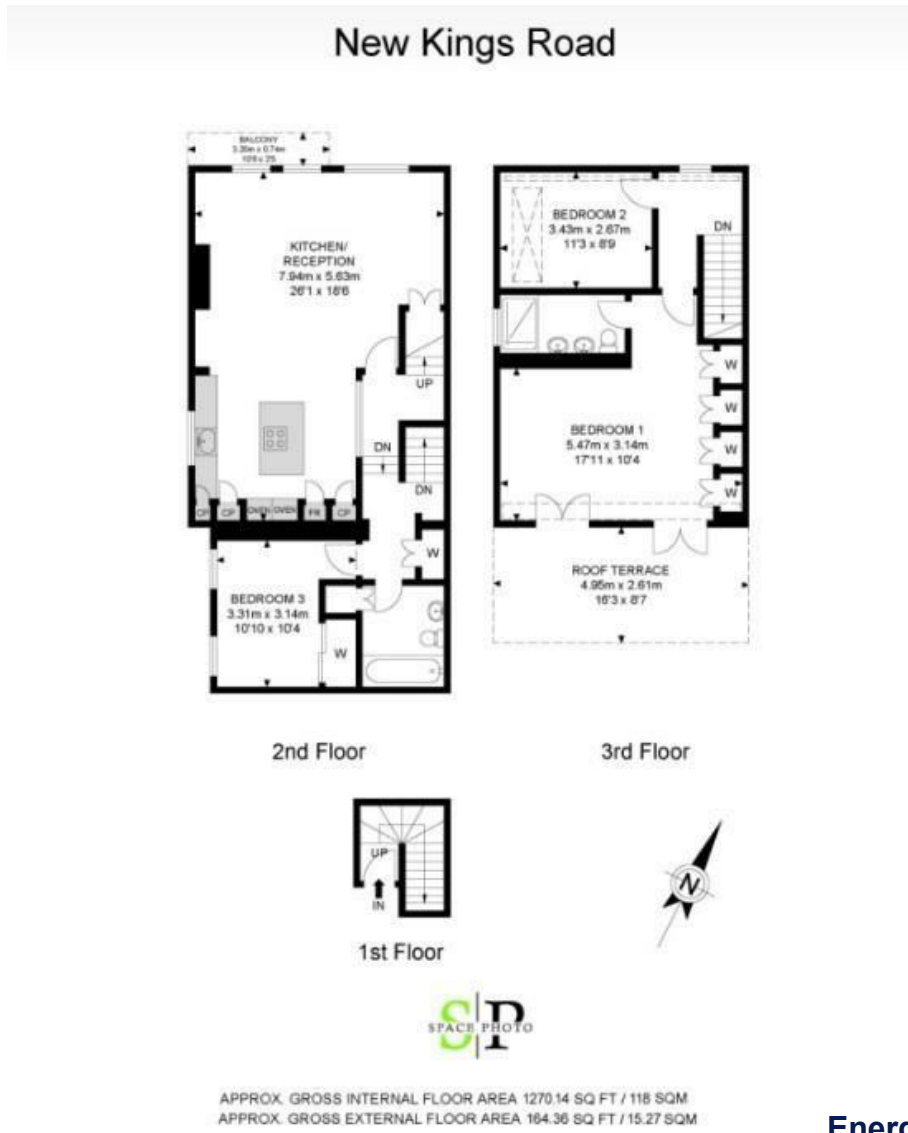
8, 171 New Kings Road, London, SW6 4SN

£1,495,000

Not often do you come across such a beautiful home. A home should be fun. It should give you enjoyment and every time you walk through your front door you should feel a sense of excitement and joy and this home delivers exactly that. Of course it also has all the practical necessities that you need and come to expect when looking for a new home.

This three bedroom flat has a fantastic, large open plan living kitchen space with modern appliances. Three large windows at the front let in an abundance of natural light as well as windows on the side which create a double aspect feel. With a feature crittall glass wall separating the hallway and kitchen there is not a space in this modern apartment which doesn't get flooded with light. Further benefitting from a fantastic roof terrace which is a real sun trap as well as being situated in the heart of Parsons Green with green leafy views this really is a unique home.

Floor Plan



Area Map



Energy Efficiency Graph

Energy Efficiency Rating		
	Current	Potential
Very energy efficient - lower running costs		
(92 plus) A		
(81-91) B		
(69-80) C		
(55-68) D		
(39-54) E		
(21-38) F		
(1-20) G		
Not energy efficient - higher running costs		
England & Wales EU Directive 2002/91/EC		
Environmental Impact (CO ₂) Rating		
	Current	Potential
Very environmentally friendly - lower CO ₂ emissions		
(92 plus) A		
(81-91) B		
(69-80) C		
(55-68) D		
(39-54) E		
(21-38) F		
(1-20) G		
Not environmentally friendly - higher CO ₂ emissions		
England & Wales EU Directive 2002/91/EC		

These particulars, whilst believed to be accurate are set out as a general outline only for guidance and do not constitute any part of an offer or contract. Intending purchasers should not rely on them as statements of representation of fact, but must satisfy themselves by inspection or otherwise as to their accuracy. No person in this firm's employment has the authority to make or give any representation or warranty in respect of the property.